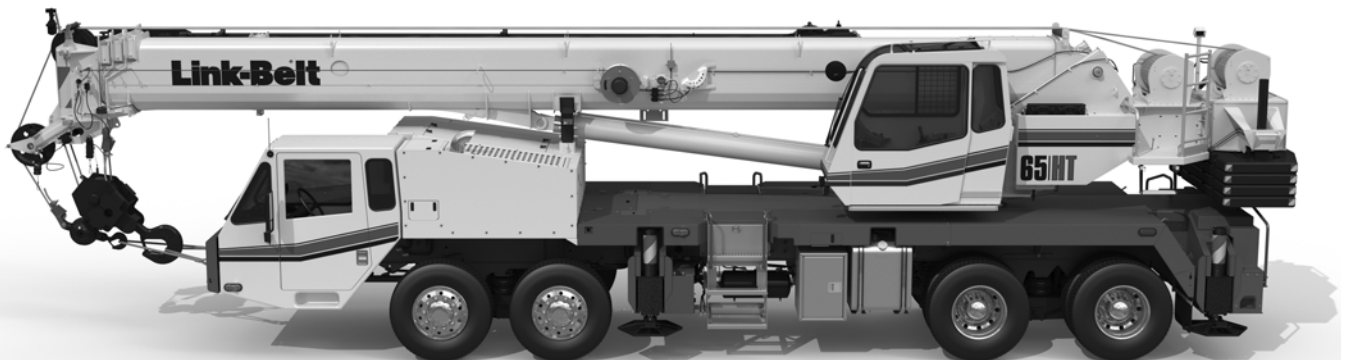


Technical Data

Specifications & Capacities

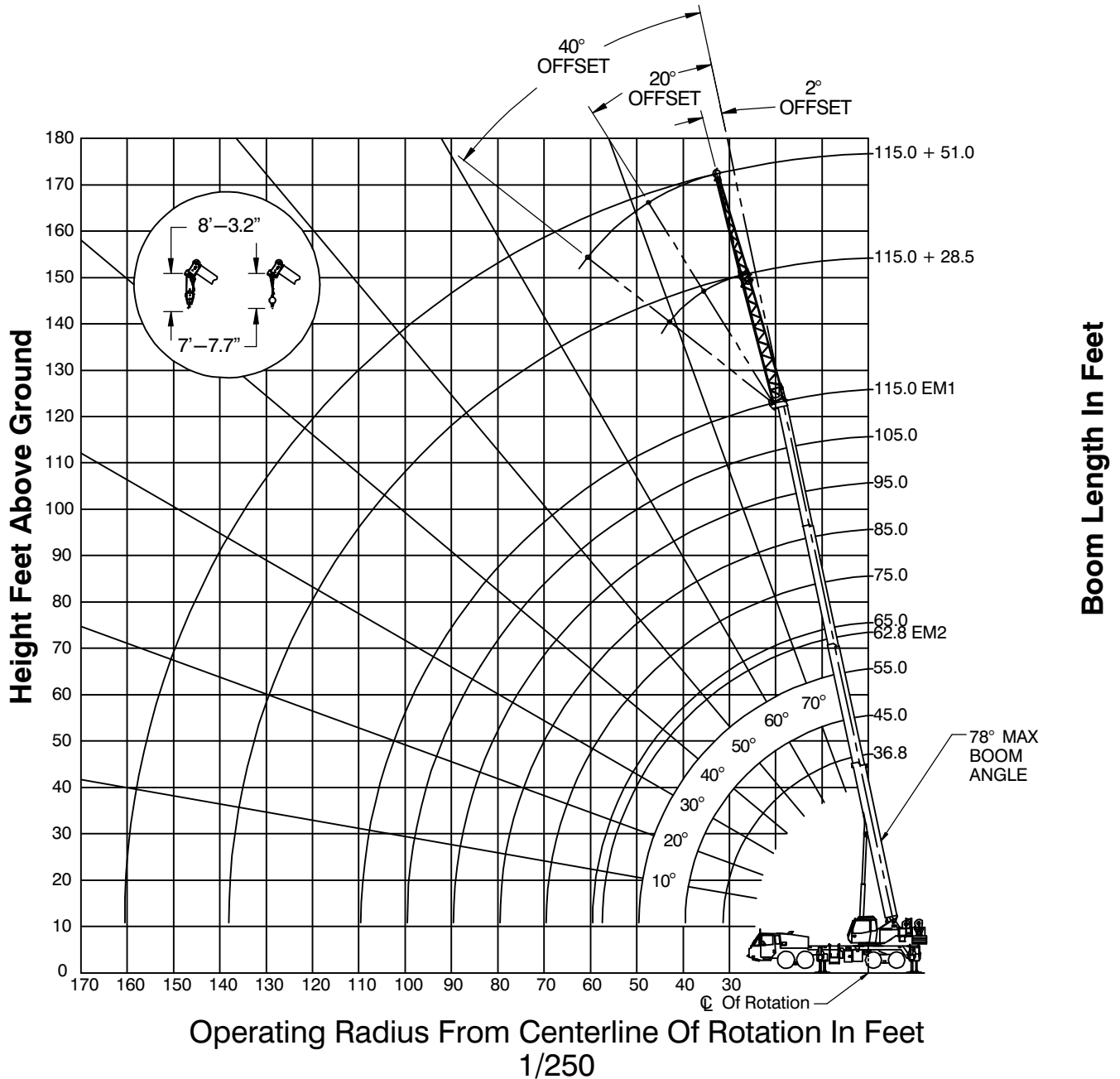
65HT

Telescopic Boom Truck Crane
65 US ton
55 metric ton



CAUTION: This material is supplied for reference use only. Operator must refer to in-cab Crane Rating Manual and Operator's Manual to determine allowable crane lifting capacities and assembly and operating procedures.

Working Range Diagram



Note: Boom and fly geometry shown are for unloaded condition and crane standing level on firm supporting surface. Boom deflection, subsequent radius, and boom angle change must be accounted for when applying load to hook.



WARNING

Do Not Lower The Boom Below The Minimum Boom Angle For No Load Stability As Shown In The Lift Charts For The Boom Lengths Given. Loss Of Stability Will Occur Causing A Tipping Condition.

Main Boom Lift Capacity Charts – Optional

18,700 lb Counterweight – Fully Extended Outriggers – 360° Rotation (All Capacities Are Listed In Pounds)										
Radius (ft)	Boom Length (ft)									Radius (ft)
	36.75	45	55	62.8-65	75	85	95	105	115	
7	130,000*									7
8	108,400									8
10	99,400	83,700	82,200							10
12	89,100	83,700	78,900	66,100						12
15	76,500	73,100	68,300	59,100	39,200					15
20	55,800	55,600	55,400	50,000	39,200	36,300	32,100			20
25	43,100	43,000	42,800	42,700	39,200	31,400	28,000	25,500		25
30	34,400	35,200	35,800	36,100	36,300	27,700	24,700	22,400	20,700	30
35		27,800	28,600	28,900	29,100	24,600	21,900	20,000	18,500	35
40			22,500	22,900	23,100	22,100	19,700	17,900	16,600	40
45			18,200	18,700	18,900	19,000	17,800	16,200	15,000	45
50				15,400	15,700	15,900	16,000	14,700	13,600	50
55				12,900	13,200	13,400	13,500	13,400	12,300	55
60					11,200	11,400	11,500	11,600	11,300	60
65					9,500	9,800	9,900	10,000	10,100	65
70						8,400	8,600	8,700	8,700	70
75						7,200	7,400	7,500	7,600	75
80							6,400	6,500	6,600	80
85							5,500	5,600	5,800	85
90								4,900	5,000	90
95								4,200	4,300	95
100									3,700	100
105									3,200	105

* Special Conditions Or Wire Rope Required

This information is not for crane operation. Operator must refer to the in-cab information for crane operation. Rated lifting capacities shown on fully extended outriggers do not exceed 85% of the tipping loads and on tires do not exceed 75% of the tipping loads.

18,700 lb Counterweight – Fully Extended Outriggers – 360° Rotation (All Capacities Are Listed In Pounds)								
115 ft Main Boom Length 2° Fly Offset			115 ft Main Boom Length 20° Fly Offset			115 ft Main Boom Length 40° Fly Offset		
Radius (ft)	Fly Length (ft)		Radius (ft)	Fly Length (ft)		Radius (ft)	Fly Length (ft)	
	28.5	51		28.5	51		28.5	51
30	11,400		30			30		
35	11,400	7,400	35	11,900		35		
40	11,400	7,400	40	11,900		40		
45	11,400	7,400	45	11,700		45	9,400	
50	11,400	7,400	50	11,200	6,700	50	9,100	
55	11,000	7,400	55	10,800	6,400	55	8,800	
60	10,000	7,400	60	9,900	6,100	60	8,500	4,200
65	9,100	7,400	65	9,100	5,800	65	8,300	4,000
70	8,400	7,400	70	8,400	5,500	70	8,100	3,900
75	7,700	7,300	75	7,700	5,300	75	7,700	3,800
80	7,100	6,700	80	7,100	5,100	80	7,200	3,700
85	6,200	6,200	85	6,600	4,900	85	6,600	3,600
90	5,500	5,700	90	5,900	4,700	90	6,100	3,500
95	4,800	5,300	95	5,100	4,500	95	5,400	3,400
100	4,200	4,700	100	4,500	4,300	100	4,700	3,300
105	3,700	4,100	105	4,000	4,200	105	4,100	3,300
110	3,200	3,600	110	3,400	4,000	110	3,600	3,200
115	2,800	3,200	115	3,000	3,700	115	3,100	3,200
120	2,400	2,800	120	2,600	3,200	120		3,100
125	2,000	2,400	125	2,200	2,800	125		3,100
130	1,700	2,100	130	1,800	2,400	130		2,600
135	1,400	1,800	135		2,100	135		2,200
140		1,500	140		1,800	140		1,900
145		1,300	145		1,500	145		
150		1,000	150		1,200	150		

This information is not for crane operation. Operator must refer to the in-cab information for crane operation. Rated lifting capacities shown on fully extended outriggers do not exceed 75% of the tipping loads and on tires do not exceed 65% of the tipping loads.